

Yale EDUCATIONAL TRAVEL
ASSOCIATION OF YALE ALUMNI

Incredible Iberia: *Portugal and Spain in Spring*

Aboard the *Sea Cloud*
April 20 – May 1, 2006



DEAR YALE TRAVELER,

The geographical setting of the Iberian Peninsula has shaped its fascinating history from prehistoric times to the modern era. Phoenicians and Carthaginians, Greeks and Romans, Muslims and Christians have all coveted its natural resources and its strategic location as the gateway between the Mediterranean and the Atlantic. In the 15th century, Prince Henry the Navigator launched the Age of Discovery, and within a hundred years Portugal and Spain were the greatest maritime powers on Earth. The Peninsula is a land of incredible natural beauty, fabulous art, and splendid architecture.

We are pleased to invite you to sail ancient trades routes along the Iberian coast aboard the legendary *Sea Cloud*, the world's most elegant sailing vessel. Begin in Lisbon, a cultural and architectural mélange that offers the vibrancy of its signature blue and white painted tiles (*azulejos*), the haunting strains of *fado* singing, the contrasting appeal of broad tree-lined avenues and narrow, medieval lanes, and a pervasive spirit of *saudade*, that untranslatable combination of joy and melancholy. To the north of Lisbon are the enchanting palaces and gardens of Sintra, a UNESCO World Heritage Site and summer home of the Portuguese royal family for centuries.

During a six-night cruise aboard the *Sea Cloud* beginning along Portugal's spectacular Algarve coast, visit the imposing Rock of Gibraltar and the legendary places of southern Spain—Ronda, one of Spain's loveliest whitewashed villages, renowned for its incredible architecture and beautiful 18th-century bullring; Granada, where Muslim architecture reached for the stars; Jerez de la Frontera, acclaimed for fino, manzanilla, oloroso, and amontillado sherry and the purebred Carthusian horse; and Seville, where the festivities and fireworks of the city's famed Spring Fair cap our adventure with a flourish.

We are especially pleased to have Giuseppe Mazzotta, a Sterling Professor at Yale, as our faculty leader. He plans a series of talks that will offer captivating insights into the literature and culture of Iberia. He is joined by **Robert Kent**, professor of geography at the University of Akron and a cultural geographer who specializes in Latin America and the Iberian Peninsula, and **Enrique Martinez-Vidal**, professor emeritus of Romance languages at Dickinson College, who has taught courses on the language, literature, and culture of Spain for more than 30 years. We are sharing this adventure with The Explorers Club, the American Geographical Society, and National Geographic Expeditions.

Experience a glorious time of year in Portugal and Spain, when temperatures are mild, spirits are high, and a festive outlook is infectious. Please join us in exploring the Iberian Peninsula in a most enjoyable way—aboard *Sea Cloud*.

With warm regards from Yale,

Joan Kneeland
joan.kneeland@yale.edu



ITINERARY

NEW YORK / LISBON, PORTUGAL

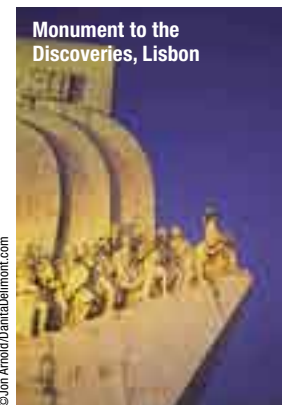
Thursday–Friday, April 20–21, 2006

Depart New York on an overnight flight to Lisbon, one of Europe's most attractive, relaxed, and welcoming capitals. Upon arrival, transfer to the Hotel Lisboa Plaza. The remainder of the day is at leisure before a festive welcome reception this evening. HOTEL LISBOA PLAZA (MEALS ALOFT)

LISBON

Saturday, April 22

The capital of Portugal since its conquest from the Moors in 1147, Lisbon rests on seven low hills beside the Tagus River,



©Jon Arnold/DanitaDelimont.com

the longest waterway of the Iberian Peninsula. Visit the impressive Monument to the Discoveries, honoring the golden age of Portuguese exploration; the Monastery

of the Jerónimos, endowed by Vasco da Gama's sovereign, King Manuel I; and the superb Carriage Museum, with gorgeous examples of 16th- through 19th-century carriages and coaches lavishly embellished with wooden sculptures, gold leaf, and crystal windows. Stroll through the Alfama, the old Moorish quarter, whose narrow winding streets and small squares provide a glimpse into a forgotten age.

HOTEL LISBOA PLAZA (B, L)

SINTRA

Sunday, April 23

Travel northwest of Lisbon to Sintra, a fascinating collection of palaces and interconnected villages now designated a UNESCO World Heritage Site. Blessed with a thickly wooded setting, romantic gardens, an amalgam of Manueline and Gothic architecture, and 16th-century hermitages, Sintra has been the summer retreat of the Portuguese royal family for centuries. Board *Sea Cloud* this afternoon and enjoy the captain's welcome reception and dinner. SEA CLOUD (B, L, D)

ALGARVE COAST (LAGOS, SAGRES, AND CAPE ST. VINCENT)

Monday, April 24

Watch the crew's acrobatic maneuvers as they unfurl the ship's thirty sails for a morning of sailing along Portugal's coastline, ablaze with spring wildflowers. Visit Lagos, Henry the Navigator's base for the African slave trade and home of the rare and beautiful Chapel of St. Anthony, wildly decorated with gilt and carvings. Continue to the fishing village of Sagres to visit Prince Henry's fortress and the lighthouse at Cape St. Vincent, Europe's southwesternmost point. *SEA CLOUD* (B, L, D)

AT SEA

Tuesday, April 25

During a full day of sailing along the Algarve, Portugal's southern coastline, enjoy an informal lecture, relax on deck, or take part in a specially arranged behind-the-scenes tour of the ship. Those who wish can board tenders for a special photo opportunity of the *Sea Cloud* under sail. *SEA CLOUD* (B, L, D)

MALAGA, SPAIN / RONDA

Wednesday, April 26

From Malaga, journey into the mountains to visit Ronda, one of Andalusia's loveliest towns. Steeped in history, Ronda is set high above the Rio Guadalevin on a plateau divided by a plunging river gorge that separates the medieval from the 18th-century parts of town. Explore Ronda's impressive architectural heritage, including Moorish and Roman remains and Spain's oldest and most beautiful bullring. *SEA CLOUD* (B, L, D)



April Fair, Seville



MOTRIL / GRANADA

Thursday, April 27

Disembark in Motril and travel overland to Granada. Here Muslim architecture reached its zenith, as evidenced in the Alhambra, one of the most remarkable fortresses ever built. Within the Alhambra complex, explore the Nasrid Palace, built around the Court of the Lions, and the splendid Generalife, or Garden of the Architect. Also visit the Capilla Real, a mausoleum built by Ferdinand and Isabel to commemorate their victory over the Moors, and the gilded and painted Capilla Mayor, with carvings of the Catholic Monarchs at prayer. Return to the *Sea Cloud* and sail to the iconic Rock of Gibraltar.

SEA CLOUD (B, L, D)

GIBRALTAR

Friday, April 28

Gibraltar, rising at the southernmost tip of the Iberian Peninsula and politically wedged between two nations—Spain and England—was considered by ancient Greeks and Romans to be one of the two pillars of Hercules, marking the boundary of the known world. Visit the fine Gibraltar Museum and the Upper Rock Nature Reserve, accessible by cable car and home to 600 plant species.

SEA CLOUD (B, L, D)

CADIZ / JEREZ / SEVILLE

Saturday, April 29

Disembark from the *Sea Cloud* this morning in Cadiz and travel inland through Andalusia's beautiful landscape to Jerez de la Frontera, the home of sherry wine and the birthplace of the Carthusian horse, the purest strain of Spanish horse. Attend a special horse show at Yeguada de la Cartuja, one of Spain's top stud farms. After a traditional *tapas* lunch featuring local wines, continue to Seville, the capital of Andalusia, for a city tour, including a visit to the Cathedral.

HOTEL COLON (B, L)

SEVILLE

Sunday, April 30

Seville is Spain's fourth largest city, a great *flamenco* center, and home of the famed *Feria de Abril*, or Spring Fair. Enjoy the festivities surrounding the fair, among the most spectacular in Spain—colorful costumes,

Wine Cellar, Jerez



Sevillanas dancing, musical performances, bullfights, carnivals, and the fine wines and foods of the region. After exploring some of Seville's highlights, including the Reales Alcazares and the Barrio de Santa Cruz, enjoy the midnight fireworks show that signals the finale of the Spring Fair. HOTEL COLON (B, D)

SEVILLE / MADRID / NEW YORK

Monday, May 1

Depart Seville for Madrid and connections through to New York. (B)

STUDY LEADERS



Professor Giuseppe Mazzotta, Sterling Professor at Yale, is chair of Yale's Italian department. He joined the Yale faculty in 1983. Professor Mazzotta is the

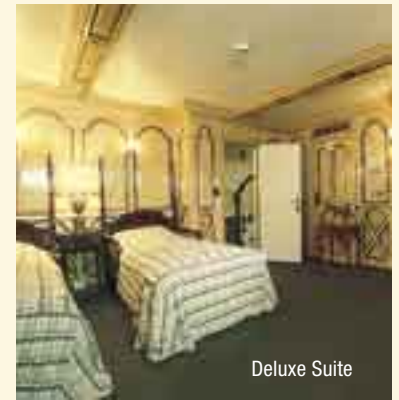
author of seven books, including a widely acclaimed volume on Dante. He has also written on Cervantes, Latin American novels, and on the cultural relations between Spain and Italy in the age of the Baroque. His recent awards include a Yale prize for distinguished teaching. He and his wife, Carol, look forward to sharing this adventure in Portugal and Spain with Yale alumni and friends.

Robert Kent is professor and chair of the Department of Geography and Planning at the University of Akron. His research interests include human geography, Latin American studies, regional and urban development and planning, and thematic cartography. He has held Senior Fulbright Lecturer Fellowships in Argentina and Honduras and is the author of *People and Regions: A Geography of Latin America*.

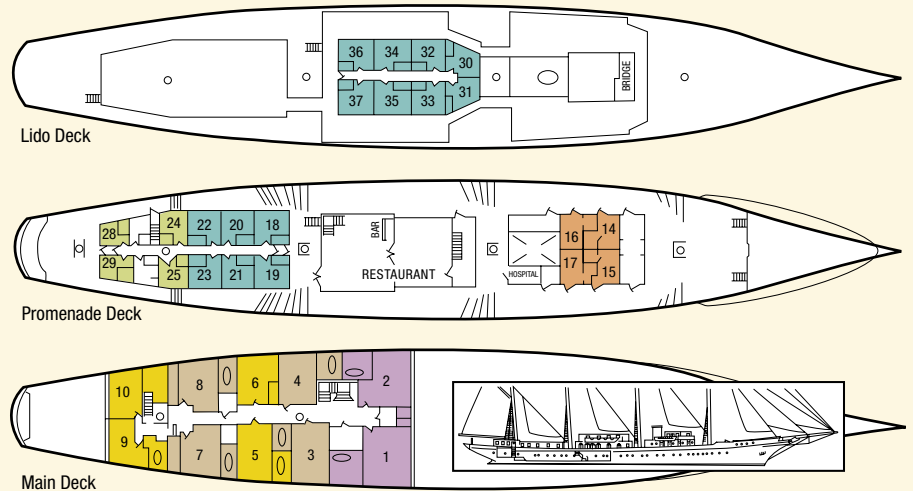
Enrique Martinez-Vidal, professor emeritus of Romance languages at Dickinson College, has taught courses on the languages, literature, culture, and civilization of Spain for more than 30 years. He is fluent in Spanish, Portuguese, and French and is an expert on the region's rich cultural history and heritage of exploration and discovery. He will share his insights on the cultures, traditions, and histories of Spain and Portugal.

SEA CLOUD

The *Sea Cloud* is a legendary ship without parallel. Although she is equipped with auxiliary diesel engines, sails are the essence of the cruise experience and they are unfurled as often as possible. Built at a time when the greatest attention was paid to detail and fine craftsmanship, the *Sea Cloud* is decorated with original oil paintings, antique furniture, rich wood paneling, and brass and bronze fixtures. Original staterooms are beautifully appointed in their own style, some with fireplaces, and each with a private marble bath with either a tub or shower. The latest technical equipment includes radar, satellite navigational aids, and satellite communications. Lunch and dinner include fine wine and beer, and there is one seating at dinner. Breakfast and lunch are buffet style. The *Sea Cloud's* snow-white hull, warm teak superstructures, and gleaming brass fittings define her rich tradition and heritage. A journey aboard the *Sea Cloud*, which carries only 64 passengers, is an intimate experience on one of the most elegant and luxurious vessels afloat.



Deluxe Suite



Registry: Malta. Gross Tonnage: 2,532. Length: 360 feet. Beam: 50 feet. Draft: 17 feet.

PROGRAM RATES

(All fares are per person, double occupancy, unless otherwise indicated.)

Type C	Promenade Deck	Stateroom with upper and lower beds and shower	\$7,595
Type B	Promenade Deck	Stateroom with two lower beds and shower	\$8,795
Type A	Lido/Promenade Decks	Stateroom with queen-size bed or two lower beds and shower	\$9,795
Superior	Main Deck	Stateroom with queen-size bed or two lower beds, bathtub or shower	\$11,295
Deluxe	Main Deck	Original stateroom with queen-size bed or two lower beds, bathtub and shower	\$11,895
Suite	Main Deck	Original owner's suite, lavishly furnished, with king-size bed, bathtub and shower	\$12,995

Single Occupancy

Type C	Promenade Deck	\$11,850
Type A	Main Deck	\$12,850

Airfare: Airfare is not included in the program rates. Information about air arrangements will be sent to confirmed participants. Our tour operator is happy to assist you in making individual air travel arrangements.

INCREDIBLE IBERIA: *Portugal and Spain in Spring*

Aboard the *Sea Cloud* • April 20–May 1, 2006

To reserve today, fax this reservation form to the AYA at 1-203-432-8144 to hold your space for one week, pending receipt of your deposit. Please make deposit check payable to High Country Passage and mail with your reservation form to Association of Yale Alumni, Yale Educational Travel, Box 209010, New Haven, CT 06520-9010.

Enclosed is my check for \$ _____ (\$1,000 per person) to reserve _____ place(s) on the Portugal and Spain program. I/We understand that final payment is due one hundred twenty (120) days prior to departure.

No check enclosed; please charge the deposit to my credit card:

American Express Discover VISA MasterCard

Account # _____ Exp. Date _____

Signature _____ Date _____

Name 1 (please print) _____ Yale Affiliation(s) _____

Name 2 (please print) _____ Yale Affiliation(s) _____

Address _____

City _____ State _____ Zip _____

Home phone _____ Work phone _____

Fax _____ Email _____

Preferred name(s) on name badge(s):

Name _____ Name _____

Stateroom Preference (please refer to deck plan and rates):

1st Choice _____ 2nd Choice _____

Single Applicants only:

I prefer single accommodations.

I plan to share accommodations with: _____

Please arrange a share for me. I am a non-smoker smoker.

I have read the Tour Information section of the brochure and the Terms and Conditions and agree to the terms and conditions stated therein.

Signature _____ Date _____

Signature _____ Date _____

TERMS & CONDITIONS

Program rates include: Comprehensive educational program by Professor Giuseppe Mazzotta of Yale, Robert Kent of the American Geographical Society, and Enrique Martinez-Vidal of National Geographic Expeditions • Six nights aboard the *Sea Cloud* • Two nights at the Hotel Lisboa Plaza in Lisbon and two nights at the Hotel Colon in Seville • Meals as indicated in the itinerary • Welcome and farewell receptions • All on-tour transportation • Shore excursions and special events, including entrance fees • Transfers and baggage handling between airports and piers for those traveling on group flights • Gratuities to guides, drivers, and ship's crew • Port taxes • Complete packet of pre-departure information including educational materials and reading list

Program rates do not include: International and domestic air transportation • Airport transfers for those not taking group flights • Passport and visa fees • Accident/baggage/cancellation insurance • Other items of a personal nature such as laundry, room service, telephone, e-mail, and fax charges, and alcoholic beverages

Reservations and Payments: Fax the reservation form to the AYA at 1-203-432-8144 to request space. You can also make an online request on the web page for this program at www.aya.yale.edu/yet/portspain06. In either case, we will hold your space for one week pending receipt of your payment. Make your deposit check (\$1,000 per person) payable to High Country Passage (or supply credit card information) and mail it with your registration form to Association of Yale Alumni, Yale Educational Travel, Box 209010, New Haven, CT 06520-9010. Final payment is due December 21, 2005, 120 days prior to departure.

Reservation Contact: Contact Joan Kneeland, Assistant Director for Education, at 1-203-432-1952, or joan.kneeland@yale.edu.

Cancellations and Refunds: Upon payment of a deposit, all reservations are subject to the cancellation provisions set forth below and by which the passenger agrees to be bound. Cancellations for all or any part of the trip shall not be effective until they are received in writing and confirmed by the Association of Yale Alumni. All reservations are subject to a \$250-per-person administrative fee from the point of booking to up to 120 days prior to departure. Cancellations received 120 days or less prior to departure could result in forfeiture of the full purchase price, unless the trip is full and your place(s) can be resold, in which case a \$1,000-per-person administrative fee will apply. We strongly urge participants to consider purchasing trip cancellation insurance. Passengers are also subject to any cancellation fees assessed by the purveyors of services, including airlines or hotels used in the itinerary. No refunds will be made for any part of this program on which you choose not to participate. Airfares are subject to applicable airline cancellation fees and are in addition to the trip cancellation fees listed above. Cancellation of the tour by the Association of Yale Alumni or our tour operator will result in a full refund.

Itinerary, Program, and Cost Modifications: The itinerary, as contained in this brochure, is subject to modifications and change by Yale Educational Travel and High Country Passage. Every effort will be made to carry out this program as planned, but alterations may still occur after the final itinerary is sent. Costs, although given in good faith and based on information available upon publication of the brochure, are also subject to change and revision.

Insurance: We strongly recommend the purchase of trip cancellation insurance, which is available for coverage of expenses in conjunction with cancellation due to illness or accident. Baggage insurance is also recommended. In the event that you must cancel your participation in a travel program, trip cancellation insurance may be the only source of reimbursement. We will send you a brochure from Travel Insurance Services, or you may obtain coverage through a company of your choice.

Health: All participants should be in good health and capable of walking over rough terrain. By forwarding the deposit for passage, the passenger certifies that he/she does not have any physical or other condition or disability that would create a hazard for him/herself or other passengers.



Incredible Iberia:
Portugal and Spain in Spring

Aboard the *Sea Cloud* • April 20–May 1, 2006

